



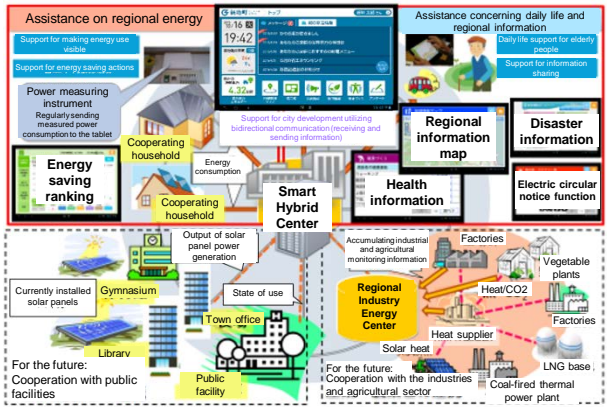
Shinchi Town formulated the First Shinchi Town Restoration Plan in 2012 for recovery and restoration from the Great East Japan Earthquake and subsequently developed the Second Shinchi Town Restoration Plan in 2015 to further promote restoration with the new vision for the restoration of Shinchi Town based on such topics as the "community and connection" and "employment and livelihood." The town will promote restoration based on the following three basic viewpoints: (1) the town that prioritizes the people's lives and livelihoods, (2) the town that nurtures human bonds, and (3) the town with an ocean that coexists with nature. The outline of the measures in the Fifth Shinchi Town General Basic Plan for the Later Term formulated in March 2016 set an object to develop a safe and secure town in harmony with nature the and environment. By introducing renewable energy, promoting local consumption of locally produced energy and utilizing regional energy with an eye to bringing about a "FutureCity," the town aims to achieve a sustainable and environmentally-friendly city life where restoration from disaster, the environment and economy harmonize with each other.

Building of a Smart Hybrid Network of Various Decentralized and Self-sufficient Energy Supplies

The town is developing a regional information communication network to address environmental issues and the aging population and promoting a social demonstration project to establish a disaster recovery model that enhances the environmental and social values.

In fiscal 2013, the town carried out the Smart Hybrid Town Development Project that aims to increase environmental, economic and social value for the creation of a "FutureCity" and developed the Shinchi Kurashi Assistant Tablet, using a grant for model projects concerning falling birth rates, the aging population and environmental issues provided by the Ministry of Internal Affairs and Communications and the Cabinet Office.

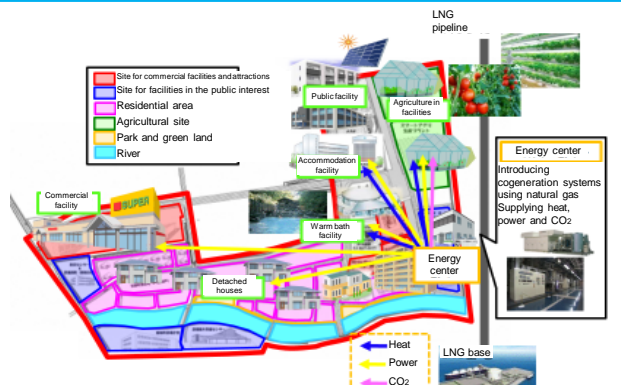
Through the establishment of bidirectional information network infrastructures regarding regional energy and aging communities and promotion of information sharing between regions, the town promotes energy saving actions in cooperation with other regions and supports the restoration of daily life by such means as providing support for elderly people.



Schematic image of the Smart Hybrid Town

City Development around the Shinchi Station and Regional Energy Project

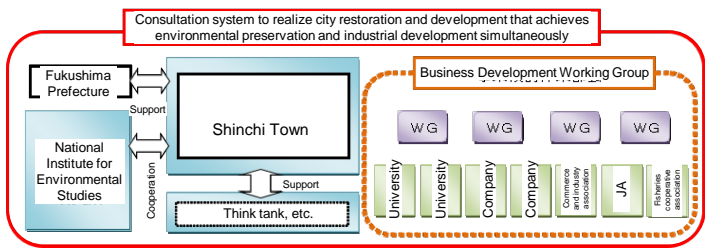
The town is conducting the Restoration and Development Project for the Urban Areas around the Shinchi Station in an area of about 24 ha around JR Shinchi Station, which was washed away by the tsunami caused by the Great East Japan Earthquake. Amid the increasing chances for use of natural gas in the region since the Soma Port LNG Project, the town is deliberating on concrete measures to conduct city development around the station and a regional energy project in an integrated manner in order to realize the town's goal of restoration and city development while maintaining the harmony of environment and industries. The town intends to start a project for a distributed autonomous regional energy system that will draw gas from a bypass of the natural gas pipelines that will be installed in the east side of the areas surrounding the station and supply heat and power to the facilities around the station using cogeneration systems, while supplying CO₂ to agricultural production facilities using trigeneration systems.



Schematic image of the City Development around the Shinchi Station and Regional Energy Project

Shinchi Town City Restoration and Development to Achieve Environmental Preservation and Industrial Development Simultaneously

From the viewpoint of achieving environmentally friendly city life and industrial development, the town has created a platform for information sharing regarding environment-related industries by forming a cooperative network between the industry, academic and government sectors, while also conducting surveys on the use of regional energy and discussions on its commercialization, as well as research studies with a view to the realization of sustainable, environmentally friendly city. At the same time, the town aims to develop a city that achieves environmental preservation and industrial development simultaneously and serves as a pillar for the town's restoration and regional revitalization in the future by promoting the accumulation of energy-related industries in cooperation with the Innovation Coast Scheme.



System of the City Restoration and Development Council

Shinchi Town "FutureCity" Promotion Office (Shinchi Town Planning and Restoration Division)
Email: kanko@shinchi-town.jp URL: <http://www.shinchi-town.jp>

Future vision for the "FutureCity" plan
"Yappari Shinchi ga line (Shinchi is our best home)" –a town with a future and hope for environment and daily living-